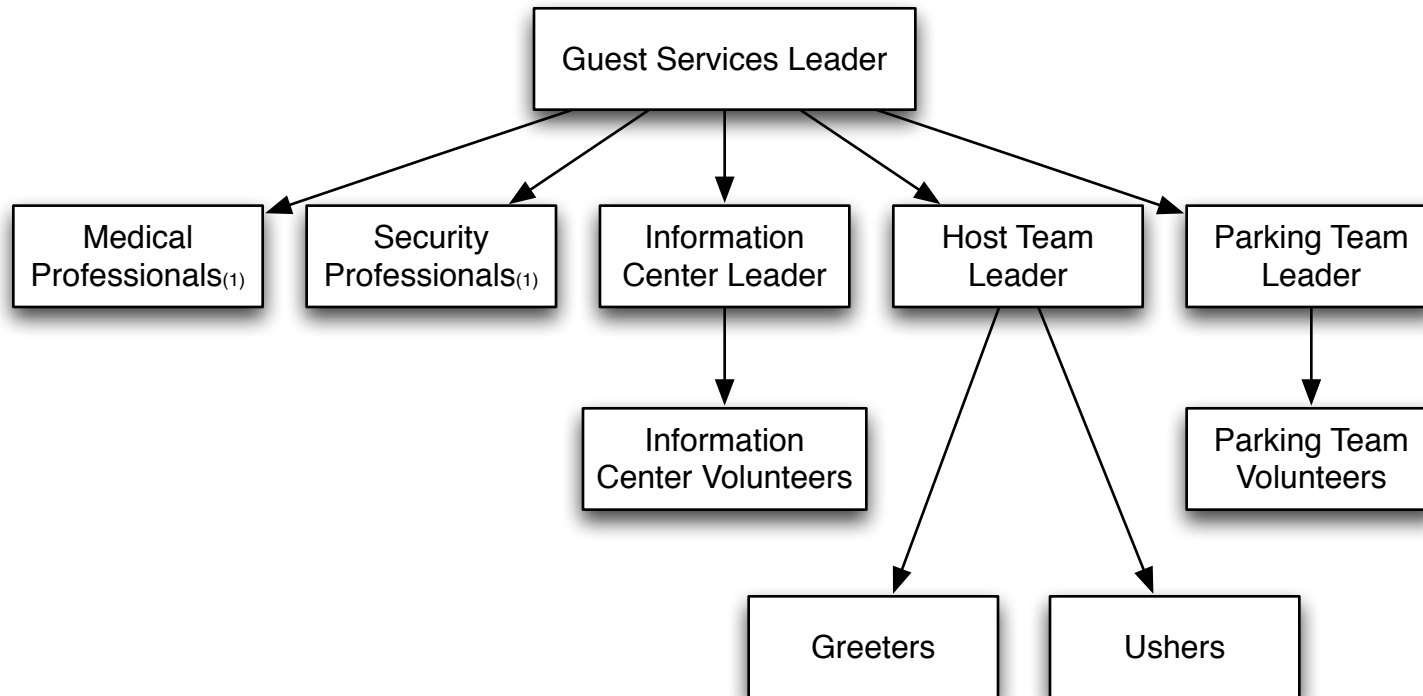


# Guest Services Org Chart Example



There are numerous ways to do Guest Services at your church. However you choose to do it, it should be an extension of your culture. Remember to be intentional and to look through the eyes of someone who is new to your church.

This org chart is a starting place for determining how Guest Services can be set up using only volunteers. Change it to best fit your setting. One person might need to take on more than one role.

**(1)** Identify who the medical and security professionals are in your church. Ask them if they would be willing to make themselves available in situations where someone with their skills is needed. Come up with a way to know where they are and how to communicate with them during the service. Create a plan for medical or security emergencies.